

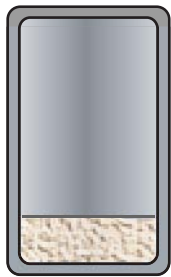
Woots & Snarks

Playing Field Diagram

Place a 1" strip of tape along the inside edge of the matboard to form a binding between the black and white halves.

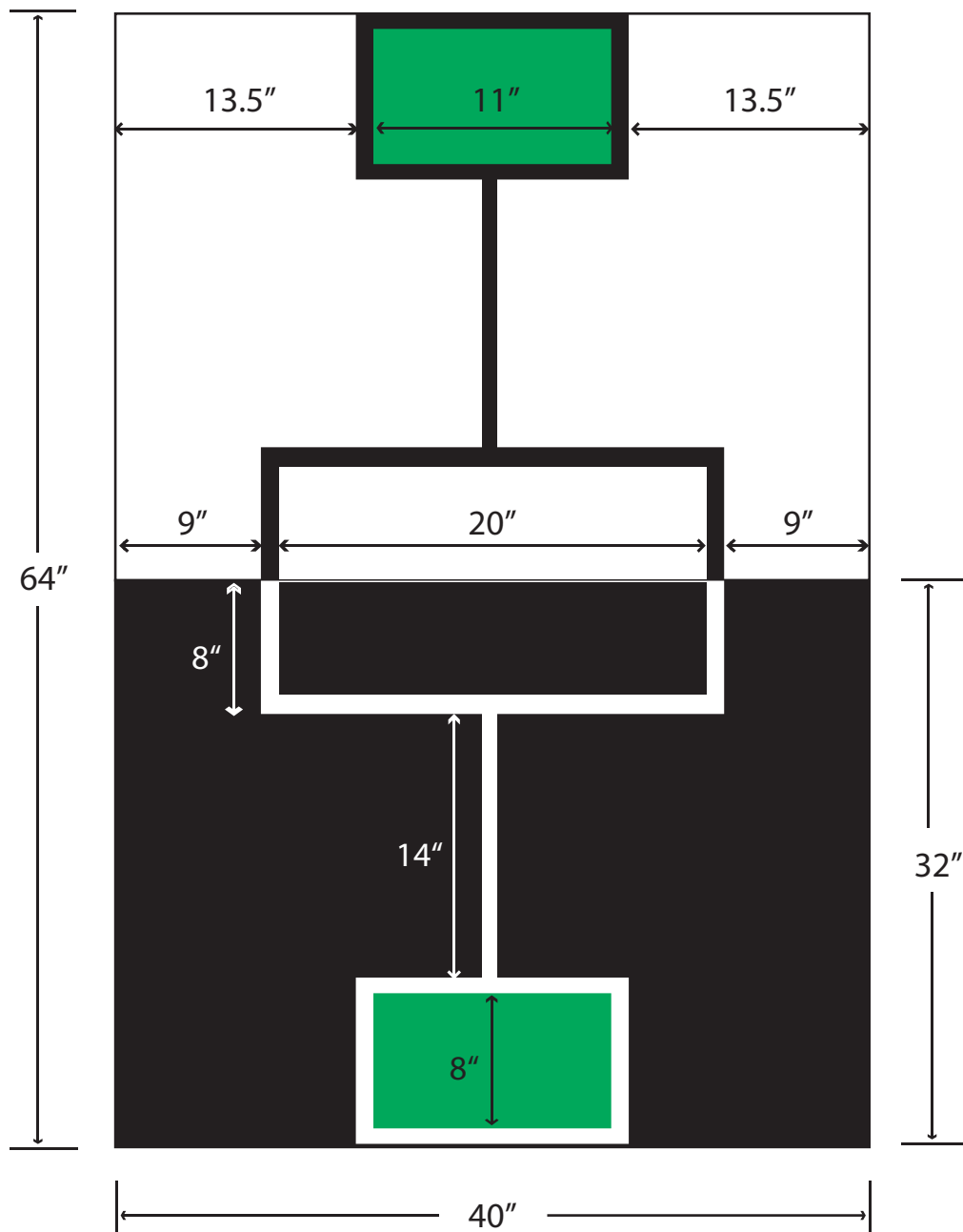
Layout the white and black tape according to the diagram to the right. The tape should overlap the green construction paper about a half inch to form each base.

Fill all cans with 1 oz. of sand or similar substance and seal with tape.



1 oz. of sand

Spray paint 4 cans with black paint and 2 cans with red paint to make your Woots and Snarks



Materials List:

Crescent Regular Surface Matboard 32" x 40" - #989 Raven Black

Crescent Regular Surface Matboard 32" x 40" - #960 White

Two Sheets of Construction Paper 9" x 12" - Holiday Green

Economy Artist's Tape 1" - White

Black Masking Tape 1" <--You should be able to find it for cheaper than this. Any 1" flat black tape will do.

Six 12 oz. Soda Cans

Red and Black Spray Paint

6 oz. Sand, Dirt, or other granular substance